

MC 2:
MIDWEST CONFERENCE
ON MISSIONARY CARE

**CHOOSING AND
ONBOARDING
NEW MISSIONARY
PARTNERS WITH
YOUR LOCAL
CHURCH**



Team Expansion

**"BEGIN WITH
THE END IN MIND"**

1) WHAT'S THE GOAL?

**2) WHAT SHOULD A
WORKER BE, KNOW,
AND DO?**

3) BEING >>> DOING




a picture of the
UNREACHED

Photo by Jeff Cunningham

DECIDE WHAT WILL BE YOUR CHURCH'S FOCUS



What Will You Change?

YOUR IMPACT

SPIRITUAL FORMATION

- SPIRITUAL
- SINGLE OR FAMILY "WHOLENESS"
- SERVANT'S HEART
- FLEXIBILITY
- CULTURAL SENSITIVITY
- COMMITMENT TO THE CHURCH



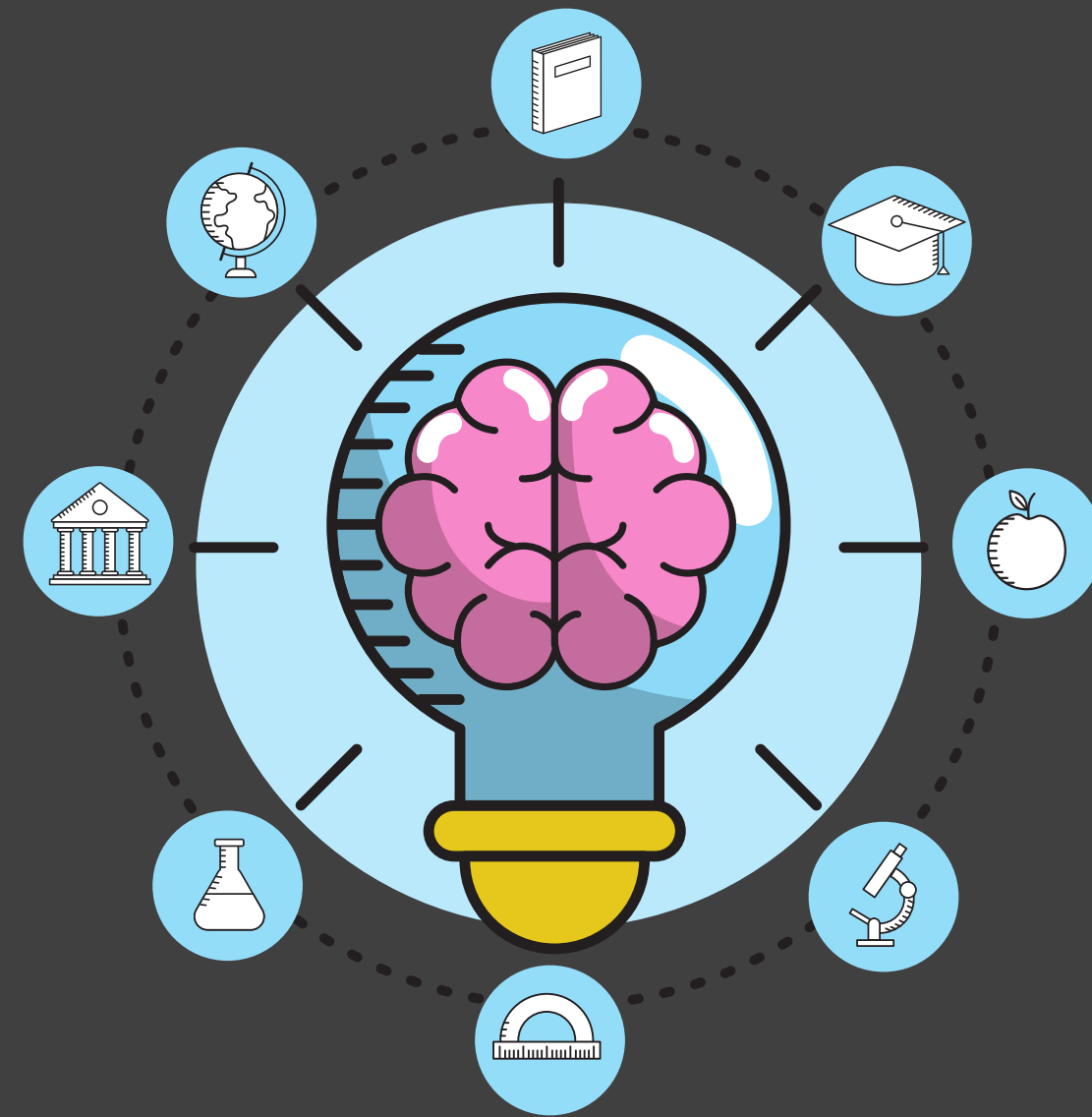
MINISTRY SKILLS

- LANGUAGE
- CULTURAL ADAPTATION
- EVANGELISM
- DISCIPLESHIP
- CHURCH MULTIPLICATION
- LEADERSHIP/FOLLOWERSHIP SKILLS
- INTERPERSONAL RELATIONS
- PROFESSIONAL COMPETENCIES AND SKILLS (I.E., TENTMAKERS)



KNOWLEDGE GOALS

- FOUNDATIONAL BIBLE TRUTHS
- MINISTRY AND MISSIONS
- LEADERSHIP AND SERVANTHOOD



THE INTANGIBLE



Give space for God

WHAT IF...

**GOD HAS PREPARED
AN ENIGMA?**

FIELD EXPERIENCE

- EXPOSURE TO OTHER CULTURES

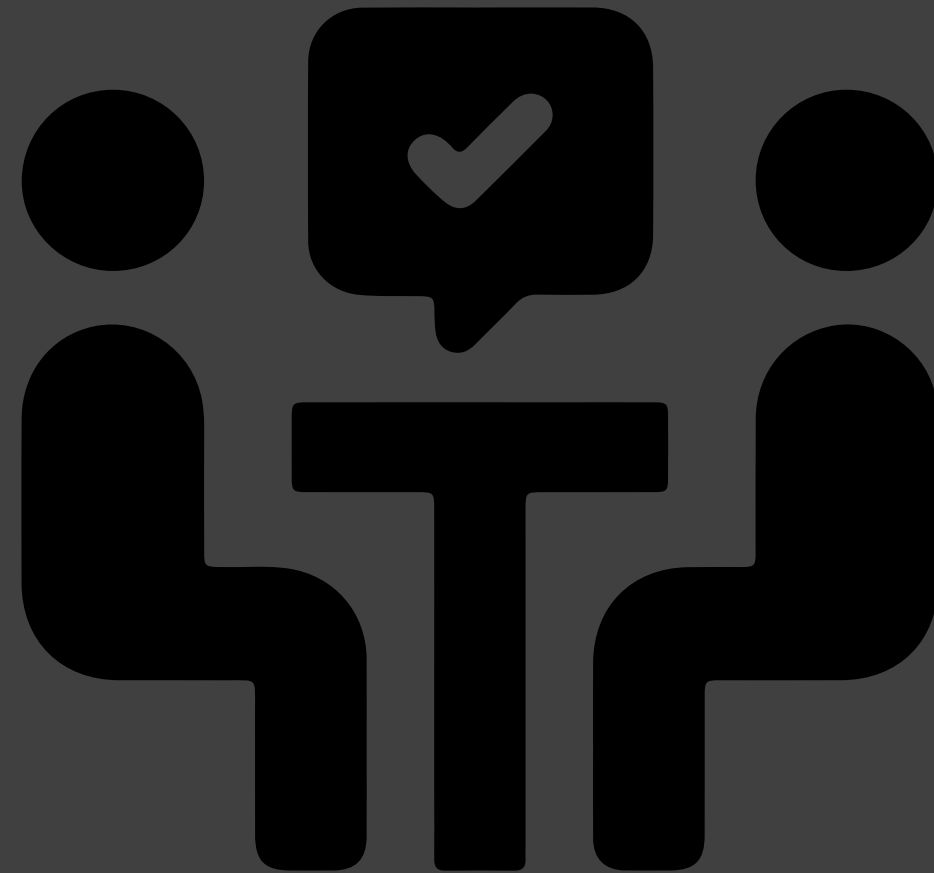



a picture of the
UNREACHED

Photo by Jeff Cunningham

CHURCH-AGENCY CONNECTING

- FINDING AN AGENCY THAT "FITS"
- REMAINING "ENGAGED" WHILE BEING CONNECTED TO AN ORG
- ENDURING -- RESILIENCE



WHAT WILL BE YOUR APPROACH?

- PULL TOGETHER A TASK FORCE
- PROPOSE A SIMPLE PLAN
- GAIN BUY-IN THEN GET STARTED
- ADJUST AS YOU GO
- DON'T LET THE EXCELLENT GET IN THE WAY OF THE GOOD
- GET A "WIN" UNDER YOUR BELT
- THEN CELEBRATE IT
- RINSE AND REPEAT

